

We harness  
technology and  
innovation to  
create market-  
leading solutions



Our Innovation motivates Us forward



# Contents

01. Introduction P.06

02. Manufactories P.12

03. Products P.16

04. Clients P.26

05. Projects P.34



# 01. Introduction



## Foundation & Development



We deliver successful outcomes for our clients, underpinned by our values of sincerity, quality and responsibility. We are continually learning and developing to build a team of highly experienced, industry-leading professionals.

BM Windows is an aluminum-glazing contractor providing solutions for project facades and glazed aluminum systems. Our services include design consultancy, production and installation. We utilise the latest technology and innovative solutions to optimise our projects and provide added value for our clients.

In the spirit of continuous innovation, BM Windows is constantly improving and investing in leading technology from around the world to create quality products, while building a team of international experts from Switzerland, Australia, and Japan.

Currently, BM Windows has been successfully undertaking a series of high-class facades and glazed

aluminum projects in Vietnam, as well as expanding to international markets, like Australia, Myanmar and Cambodia.

With strong financial foundations, a competent and enthusiastic team, and remarkable installation capacity, BM Windows has abundant potential and ambition to make an impact on the international aluminum-glazing industry.

### Highlights

Revenue 2019: 90 million USD.

More than 200 large-scale projects from international and domestic clients.

Manufacturing capacity of 1.3 million square metre of facade and glazing aluminum systems per year.

More than 400 engineers from top universities.



# Our Company

## Vision

To become an international aluminum-glazing-facade brand built on the latest technology and driven by innovative solutions.

## Mission

Continuous improvement to deliver optimum solutions and create added value for our customers, while producing sustainable, beautiful outcomes for all our projects.

## Core Values

Sincerity  
Quality  
Accountability

## Cultures

Respect  
Self-regulation  
Solidarity



**Mr. Tran Van Tien**

*General Director*

BM Windows has a solid foundation of knowledge and experience in the facade, aluminum and glass industry, demonstrated through hundreds of world-class projects. We will continue to seek out and provide services for projects around the world, and contribute to the creation of unique architectural masterpieces.



**Mr. Huynh Nhat Minh**

*Chairman of the Board*

BM Windows always aims to offer our clients the best possible value. Our team continues to learn from the world's leading aluminum and glass companies, such as Schuco and YKK, to ensure our work meets the highest standards. BM Windows is not just a contractor of aluminum and glass, but a supplier of aluminum and glass solutions that meet the exacting requirements of our clients.



**Mr. Roger Karl Schaerer**

*Engineering Director*

BM Windows' aim is to achieve total client satisfaction by providing high quality custom designed facade solutions. We strive to go that extra mile in order to bring the ultimate comfort to that living and/or working environment by supplying high performance building envelope products, protecting you from any unpleasant climate and other negative impacts. We are able to comply with most stringent international specifications yet still keeping value engineering solutions in mind, ensuring clients budget compliance.



**Mr. Satoshi Takemoto**

*Technical Director*

We - BM Windows - are widely acknowledge for our special capacity to transfer the most original architectural concepts into innovative practical solutions. We are here for you from start to finish. We work together with architects, contractors and owners through all projects from early stages, concept design through project completion and after-sales service, with a wealth of experience in various materials and methods. We offer assistance to our clients prior to project award, in the form of feasibility studies, cost comparisons and technical advice.



# History

09/11/2016

Ground-breaking for the factory in Binh Duong province

10/05/2017

Strategic partnership with Elumatec – Germany

15/09/2017

Inaugurating BM Forms factory.

30/04/2018

Finishing the façade system of 45-storey Imperia Hai Phong within 4 months.

20/03/2019

Exporting to Australia for the first time.

25/06/2019

Exporting to Myanmar.

09/09/2019

Exporting to Cambodia.

30/04/2020

Finishing the façade system of Capital Place.

19/07/2016

BM Windows was established

16/03/2017

Strategic partnership with Schuco.

05/07/2017

Inaugurating the factory in Binh Duong province with the capacity of 1.000.000m<sup>2</sup>/year and Awarded LEED Certificate.

07/12/2017

Inaugurating the factory in Hanoi with the capacity of 300.000m<sup>2</sup>/year.

15/10/2018

Finishing the façade system of Viettel Group Headquarter within 2 months.

03/06/2019

Strategic partnership with YKK.

06/12/2019

Inaugurating Hanoi representative office.

30/06/2020

Finishing the façade system of Hilton Saigon Hotel.



# 02.Manufactories



Design, manufacture & installation







Each year, BM Windows' factories provide more than 1,300,000m<sup>2</sup> of facades and glazed aluminum to the market, showcasing pioneering quality and aesthetics.



We have made big steps forward in designing, manufacturing and installing unitized systems for international projects, together with key products such as facades, doors, windows and balustrades.

BM Windows factories are fully equipped with modern machines from Elumatec (Germany), and operate with an ERP management system, with automation across design, production management, and installation to ensure consistent product quality.

To ensure sustainable and community-oriented development, BM Windows builds and operates factories that comply with LEED Silver standards.

This is an international standard of green building for energy savings, water efficiency, CO<sub>2</sub> emissions reduction, improved indoor environmental quality, and the stewardship of resources and sensitivity to their impact on the environment.

Currently, BM Windows has large factories in both the north and south of Vietnam. We also operate a factory specializing in construction method solutions to create added value for our clients.



# 03. Products

Functional, high-quality, aesthetic solutions



Facade, Glazed Aluminum  
Doors, Glazed Aluminum  
Windows, Glass Partition,  
Glazed Balustrade, Glazed  
Shower, Canopy, Aluminum  
Louver, Aluminum  
Composite/Aluminum Solid



Facade & Curtain Wall



BM Windows has designed, manufactured and installed international-standard facade systems for many large-scale projects. The products offered by BM Windows include the Unitized System, Semi-Unitized System, Spider System and Stick System.

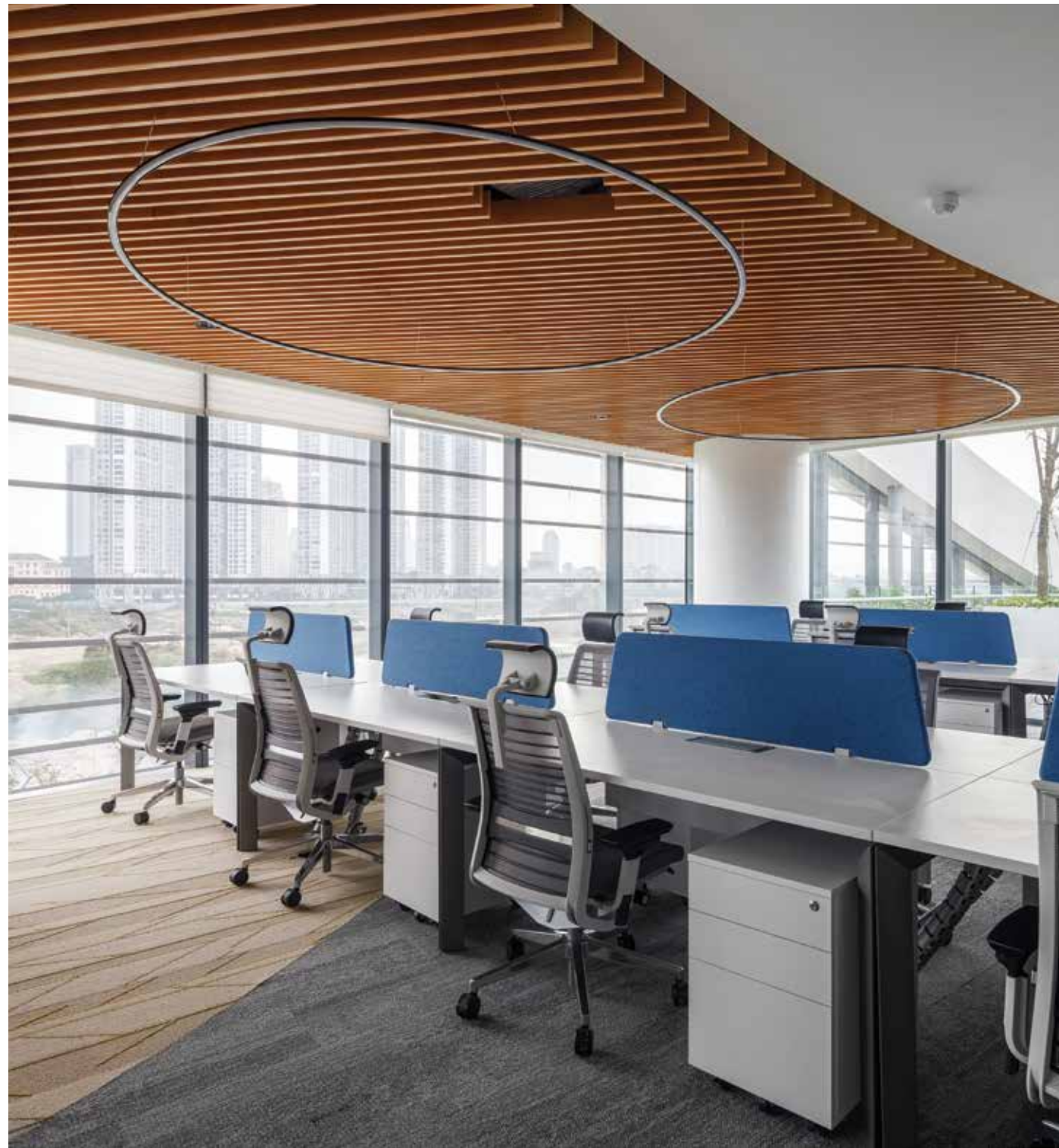


Glazed aluminium doors & windows

BM Windows’ doors include swing doors, automatic doors, horizontal doors, folding sliding doors, sliding and tilt doors, and floor-hinge doors. Windows include side hung windows, sliding windows, and top hung windows. Products have excellent soundproofing and temperature insulation, and are tight fitting. Featuring a convenient and lightweight opening and closing design, they are diverse in size and style, and suitable for many architectural designs.







## Glass Partition

BM Windows offers folding glass partitions, frameless partition, and framed glass partition. By using tempered glass for high impact resistance, the partitions are safe to use. They provide good sound and temperature insulation and are easy to clean. Lightweight and fast to install, our glass partitions do not warp over time.



## Glazed Balustrade

Using tempered glass for durability and ultra-safety, glazed balustrades are temperature and vibration resistant, and offer load support. Suitable for many types of architecture such as townhouses, high-grade villas, office buildings, apartment complexes, resorts, and swimming pools, they bring a delicate, modern and luxurious beauty to living spaces.



## Glazed Shower

Glazed showers include swing shower doors and sliding shower doors. Made from tempered glass, they ensure safety for the customer, provide good temperature and sound insulation, are water leakage proof, and easy to clean. Aesthetically pleasing, they create a comfortable space for the customer.





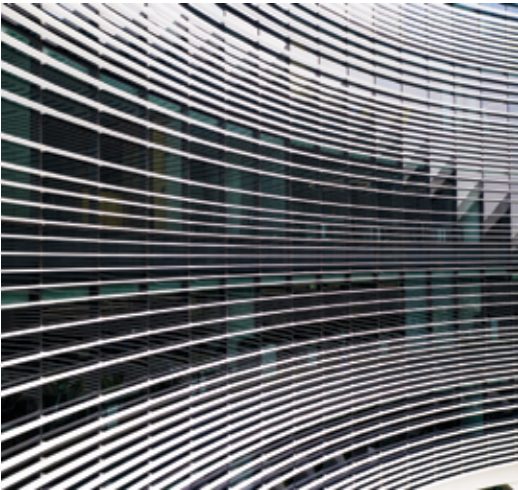
# Canopy

Using tempered glass for ultra-heat and impact resistance, our canopies are absolutely safe for the customer. They allow natural light penetration so living spaces can be expanded, while saving energy for the house too. Compact in design, they are designed in a modern and luxurious style.



# Aluminium Louver

Besides their decorative features, the advantages of our louvers include radiation heat reduction, and good ventilation while blocking sunlight and rain. The louvers come in a variety of designs and colors, with high aesthetic appeal.



# Aluminum Cladding in Aluminium Composite or Aluminium Solid

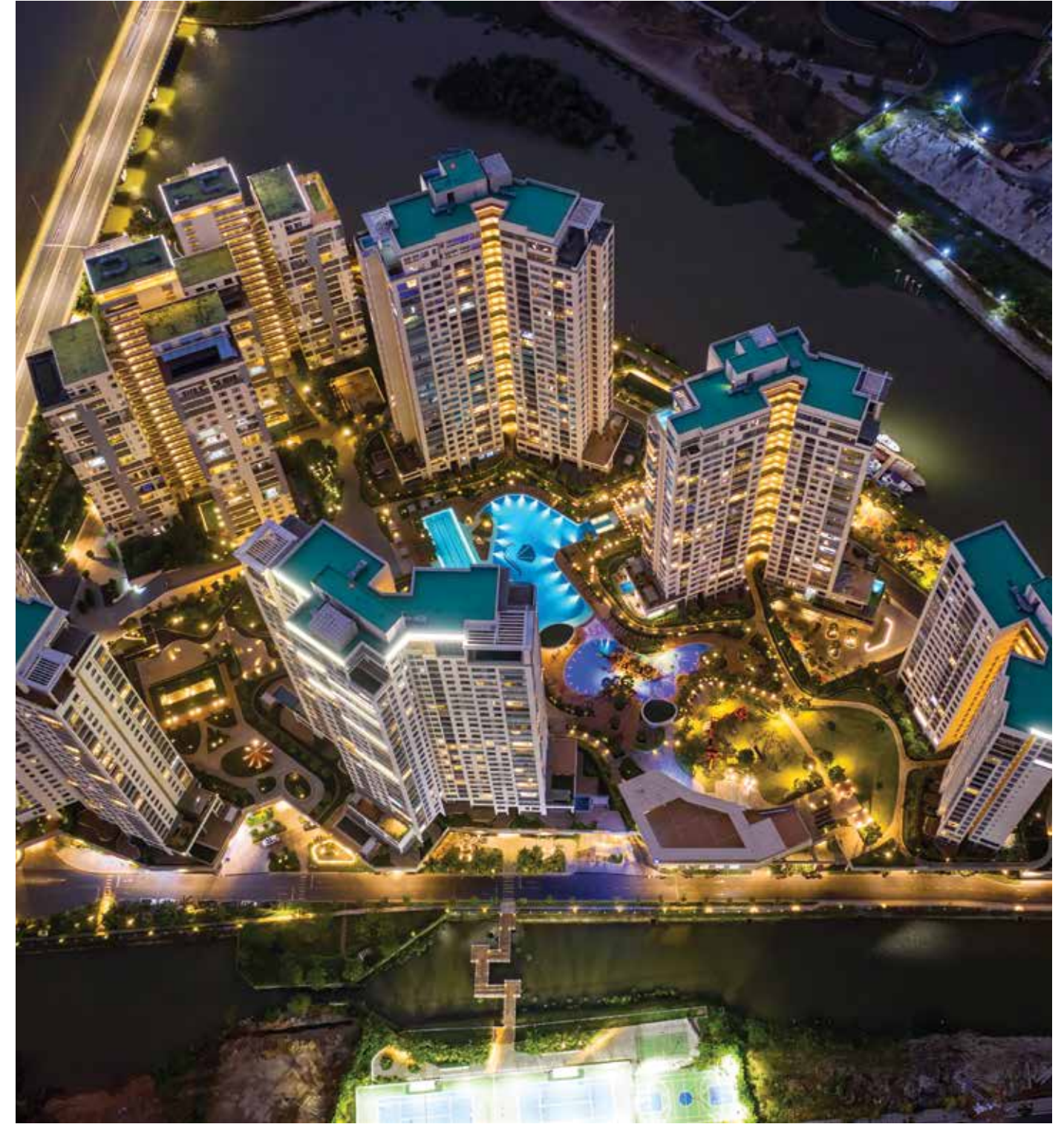
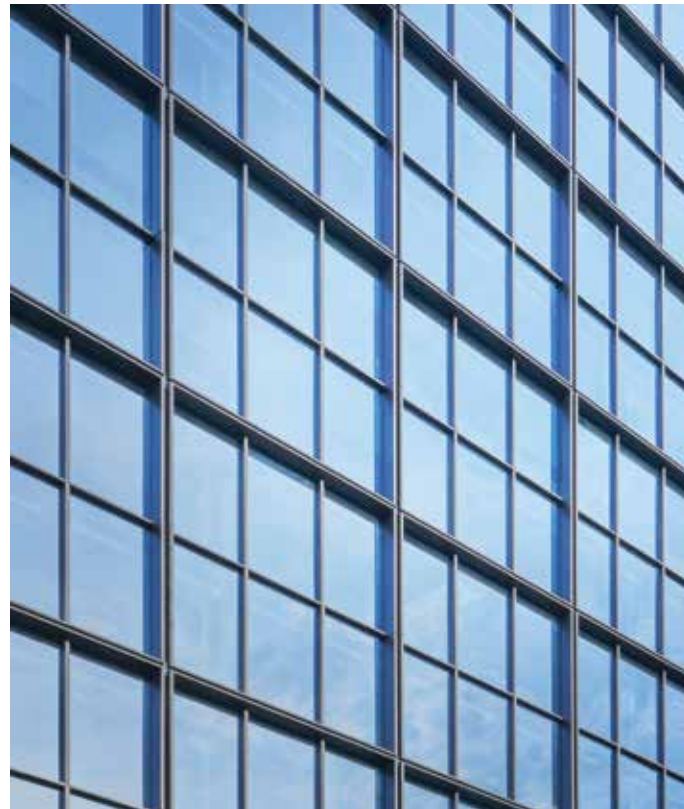
Fully meeting the requirements for stopping humidity, heat, sound, fire, and impact, this product adapts seamlessly to any weather conditions. It can be bent or curved to construct domes, circular columns, or curved corners, and is suitable for any style of architecture.





# 04. Clients

The strength of global partnerships





# Clients



Hongkong Land is a major listed property investment, management and development group. Founded in 1889, the Group owns and manages more than 850,000 sq. m. of prime office and luxury retail property in key Asian cities, principally in Hong Kong, Singapore, Beijing, Jakarta and Ho Chi Minh City.



Mapletree is a leading real estate development, investment, capital and property management company headquartered in Singapore. The Group owns and manages properties in Asia Pacific, Europe, the United Kingdom and the United States. The Group also has an extensive network of offices in Singapore, Australia, China, Hong Kong, the UK, the US, Vietnam etc.



Keppel Land is the property arm of Keppel Corporation, one of Singapore's flagship multinational companies with a global footprint in more than 20 countries, providing solutions for urban development and asset management. Keppel Land is geographically diversified in Asia, with Singapore, China and Vietnam as its key markets.



CapitaLand is one of Asia's largest diversified real estate groups, headquartered and listed in Singapore. CapitaLand's portfolio spans across diversified real estate classes. With a presence across more than 200 cities in over 30 countries. The Group focuses on Singapore and China as its core markets, while it continues to expand in markets such as India, Vietnam, Australia, Europe and the USA.



Gamuda Berhad is an engineering, property and infrastructure company based in Malaysia. It is one of the largest Malaysian infrastructure companies, with a proven track record of delivering innovative breakthrough solutions worldwide. Established in 1976, the company currently expands to 8 countries with more than 4,100 employees.



Becamex Tokyu Co., Ltd was established in March 2012 as a joint venture between Tokyu Corporation and Becamex IDC Corp. The Tokyu Corporation began in 1922 with the cornerstone of urban development and transportation services. Becamex IDC Corp. was established in 1976, investing mainly in construction of industrial zones, residential areas and urban traffic infrastructure.



Shimizu Corporation was founded in 1804 and entered the overseas market in the 1970s. The company has developed a track record over 60 countries, participating in construction of manufacturing facilities, high-rise buildings, bridges, subways, and other construction projects in countries around the world, primarily in Southeast Asia.



Obayashi was established in 1892, with the core business of building construction, civil engineering and real estate development. Currently, Obayashi owns 120 subsidiary companies with overseas offices in 14 countries, employing more than 15,000 people.



Frasers Property is a multi-national company that develops, owns and manages a diverse, integrated portfolio of properties, with the headquarters in Singapore. The company's assets range from residential, retail, commercial & business parks, to industrial & logistics in Southeast Asia, Australia, Europe and China.



# Clients



Vingroup is the largest private enterprise in Vietnam and has the largest market capitalization in the Vietnamese stock market. After establishing its hospitality and real estate businesses, Vingroup has become a conglomerate with a wide range of operations including residential real estate development, retail real estate leasing, hospitality development and operation, consumer retail, healthcare, education, agriculture, industrials, and technology development.



Coteccons Construction Joint Stock Company was established in 2004. After many years of impressive development, Coteccons has maintained its position as the leading construction company in Vietnam since 2010. The private construction corporation has made a positive contribution to the construction industry in Vietnam. Some outstanding projects of Coteccons include: Landmark 81, Casino Nam Hoi An, Vinfast, Hoa Phat Dung Quat etc.



Establish in 1992, throughout its 26 years of operation, Novaland has become a prominent Real Estate Investment & Development company with diversified portfolios covering condos, villas, shop houses, shopping centers, offices, and hospitalities. Some typical projects of Novaland include: The Sun Avenue, Sunrise Riverside, The Park Avenue, Richstar, Saigon Royal, Orchard Parkview etc.



Phu My Hung Development Corporation is the Infrastructure developer of the New City Center in Ho Chi Minh City, typically Nguyen Van Linh Parkway and Phu My Hung Urban Area. The company was established in 1993 as a joint-venture between the Ho Chi Minh City People's Committee and Phu My Hung Asia Holdings Corporation.



Thao Dien Investment Joint Stock Company, well known for its luxury real estate brand Masteri, is the developer of many upscale residential projects contributing the growth of Eastern HCMC. Thao Dien Investment has comprehensive investment portfolios with a proven commitment towards providing the best quality products. Typical projects of Thao Dien Investmet include: Masteri Thao Dien, Masteri An Phu, Millenium, M-One Saigon South, M-One Gia Dinh.



Dai Quang Minh Real Estate Investment Corporation was established in 2011, with activities focus on five main areas: housing investment and development, investment in commerce and services, investment and development of industrial parks, investment and development of transportation infrastructure and social facilities, tourism and accommodation services. In the field of real estate investment, Dai Quang Minh has been investing in urban development in HCMC, Quang Nam, Ben Tre, and Dalat.



Techcombank was established in 1993, being one of the leading commercial banks in Vietnam with a sustainable financial foundation and outstanding product - service portfolio. The Bank provides a broad range of products and services to more than 6 million retail and corporate customers in Vietnam through extensive network of 1 head office, 2 representative offices and 314 transaction offices across 45 cities and provinces nationwide.



Established in 1992, with 28 years of development, Nam Long has developed to a Group with 20 subsidiaries. Land and township development are oriented as core business in the strategic of Nam Long development, especially in the South of Vietnam: Can Tho, Long An, Ho Chi Minh City. In the category of housing development, Nam Long focus on the strategic of core products, Ehome/ EhomeS, Flora and Valora.



Founded in 2003, VinaCapital is one of Vietnam's leading investment management and real estate development firms, with a diversified portfolio of USD3 billion in assets under management. VinaCapital's expertise spans a full range of asset classes including capital markets, private equity, real estate, venture capital, and fixed income.



# Business Partners



Established in 2010, with offices across Asia Pacific, the Middle East and UK, Inhabit has developed a diverse international body of work that includes partnerships with some of the most creative and celebrated architects around the world, resulting in a wealth of experience in different project types and scales.



Aurecon is an engineering, design and advisory company. The brand was created in 2009, but the company's history began in 1934 in Sydney, Australia. Aurecon retains a strong international presence with business across Australia, New Zealand, Asia and the Middle East.



With Australian heritage, Meinhardt has the headquarters in Singapore and proven track record in Asia, the Middle East and Europe since the 1970's. The company has more than 50 offices worldwide with 4,500 professionals, being one of the most respected Asian-based engineering companies.



The Schüco Group develops and sells system solutions for windows, doors, façades, sliding systems, security technology and sun shading. The company is active in more than 80 countries with more than 5,650 employees worldwide, striving to be the industry leader in terms of technology and services.



The Technal brand from Hydro was created over 60 years ago and is a pioneering international specialist in architectural aluminium facade systems. Hydro is a fully integrated aluminium company with 35,000 employees in 40 countries.



Reynaers Aluminium is a leading European specialist in the development and marketing of innovate and sustainable aluminium solutions for windows, doors, curtain walls, sliding systems, sun screening and conservatories. The company is founded in 1965 and is part of the Reynaers Group, currently employing over 2,322 workers in more than 40 countries worldwide.



Founded in 1934, YKK has a global network of 109 companies in 72 countries/regions, employing 46,261 people. The YKK Group global management matrix consists of two core operations—the Fastening Business and the Architectural Products Business, which provides the two core operations with an integrated system of production; and a six-region global management structure which conducts regional business.



LIXIL was born in 2011 through a merger of five of Japan's most successful building materials and housing companies, TOSTEM, INAX, Shin Nikkei, Sunwave, and TOEX. LIXIL Group has approximately 270 subsidiaries and affiliates operating in more than 150 countries.



Saint-Gobain is a French multinational corporation, founded in 1665 with 350 years of history. The company designs, manufactures and distributes materials and solutions for buildings, transportation, infrastructure and many industrial applications; currently presents in 68 countries with 171,000 employees.



Viracon is part of Apogee Enterprises, Inc., founded in 1949 and headquartered in Minneapolis, MN. Apogee provides distinctive metal and glass solutions for enclosing commercial buildings, glass and acrylic solutions for picture framing and display applications.



Founded in 1907, AGC's business extends into over 30 countries and regions with regional pillars in Japan/Asia, Europe and North and South America. The Group has 213 companies with more than 55,000 employees. Their main products include glass, electronics, chemicals, ceramics and others.



# 05. Projects



A track record of success

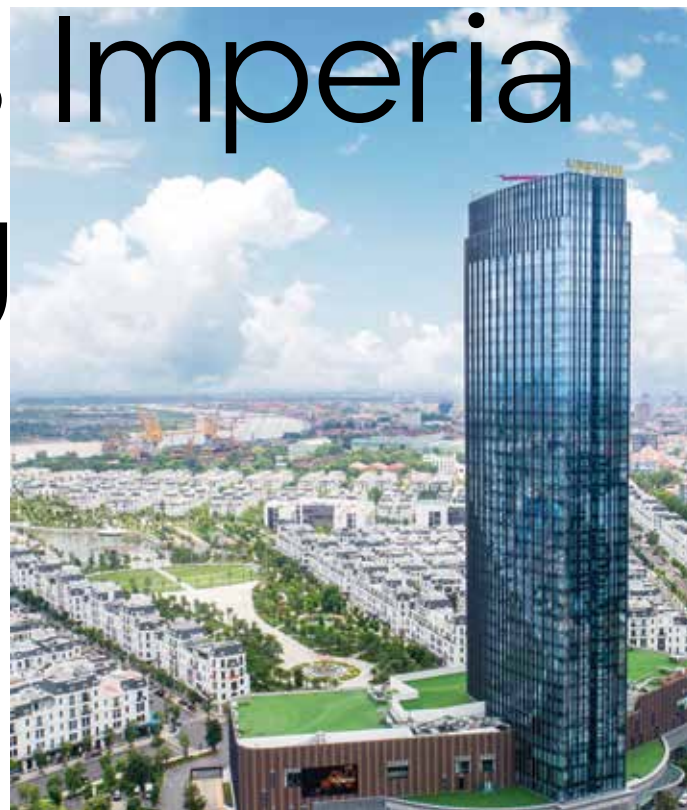




# Vinhomes Imperia Hai Phong

Vinhomes Imperia with a total area of 78.5ha, located in the connection gateway of the main roads, is designed by Humphreys & Partners (USA). The highlight of Vinhomes Imperia is a 45-storey complex of hotel-commercial-entertainment with BM Windows aluminum and glass items, especially the unitized facade system with unique architecture showing the magnificent beauty of the overall building. Vinhomes Imperia is the tallest tower in the Northeast area, symbolizing the dynamic and prosperous development of Hai Phong.

Location: Hong Bang District, Hai Phong City



## Specifics

Developer: VinGroup

Scale: 45-storey hotel and commercial tower.

Categories: Unitized Curtain Wall, Doors, Windows, Balustrades, Louvers, Canopy.

Construction time: 2018-2019

[www.bmwindows.vn](http://www.bmwindows.vn)



# The Marq

Situated very close to HCMC icons such as Notre-Dame Cathedral, Independence Palace, business and amusement places, The Marq creates a lavish hideaway in the heart of the city. With the sophisticated design of a landscaped city retreat that will fuse modern architecture with natural elements, The Marq's spaces are delicately crafted to capture the essence of a refined lifestyle.

Location: District 1, Ho Chi Minh City.



## Specifics

Developer: Hongkong Land & An Khang

Scale: High-End Residential and Office Tower, 26-storeys and 4 basements.

Categories: Semi-Unitized Curtain Wall, Doors, Windows, Balustrades, Decorative Aluminium Fin, Louvers.

Construction Time: 2019-2020.





# Capital Place



Drawing inspiration from a local legend, the building seeks to emulate a live dancing dragon into its architecture and exterior glass orientation. It stands to exhibit its legendary inspiration and serve as an iconic new beacon for the city skyline. For this project, BM Windows has used 10,026 modules of unitized system with Low-E double glazing. In particular, there are modules up to 7.2m tall and frameless glass walls up to 5.4m high. The angle of glass in the modules also changes from 0, 3, 6, and 9 degrees, making the reflection of light change from time to time.

Location: Ba Dinh District, Hanoi.

## Specifics

Developer: Capital Land

Scale: Two 37-storey  
Official Towers

Categories: Unitized Curtain  
Wall System

Construction time: 2019-2020



# Viettel Group Headquarters

Viettel Group Headquarters has a unique eclipse-shaped design and Vietnam's first level stratification unitized facade system. The project also has Vietnam's highest 4-layer heat-strengthened glass with 11.7m. It features 13,000 m² of unitized facade, 31,000 m² of louver, and 1,000 m² of glass partition. All materials are high-end with glass from the USA, aluminum from France and accessories from G7.

Location: Cau Giay District, Ha Noi.



## Specifics

Developer: Viettel Military Industry and Telecoms Group.

Scale: 9 storeys with 1 basement.

Categories: Unitized Curtain Wall, Decorative Cladding.

Construction time: 2018-2019



# Hilton Saigon Hotel

The five-star hotel project has an investment of some US\$100 million. With a height of 154 meters, Hilton Saigon will be the tallest five-star hotel in HCMC. The facade of Hilton Saigon is highly sophisticated as it will be made of 1,755 modules with sun louvers. The low-emissivity insulating glass, meeting the United States' standards, will help save energy. The facade of Hilton Saigon will be capable of resisting blazes and earthquakes of up to 6 on the Richter scale. The roof of the building, which is designed like a crown, and the lighting system, which is being completed by BM Windows, will also make the building more impressive.

Location: District 1, Ho Chi Minh City.



## Specifics

Developer: Sai Gon Cuu Long Business Production Investment Corporation.

Scale: 40-storey international hotel.

Categories: Unitized Curtain Wall.

Construction time: 2019-2020.



# Pullman Hai Phong

With a total investment of 70 million USD, Pullman Hai Phong is one of the architectural symbols of the 3rd largest city in Vietnam. The hotel will be managed by Accor Group of France and is considered as one of the foundations to promote the tourism industry of the city. The project has a total of 12,000m² aluminum glazing, 13,000m² of decorative cladding and 3,000m² of perforated cladding. The glazed and decorative aluminum facade panels have a typical winding design, requiring innovative solutions and high installation techniques from BM Windows.

Location: Ngo Quyen District, Hai Phong City.



## Specifics

Developer: Nhat Ha Ltd. Co.  
Scale: 5-star hotel with 32 storeys and 1 basement.  
Categories: Curtain Wall, Door, Windows, Alu Solid Panels.  
Construction time: 2019-2020.



# Diamond Island

Diamond Island won "Best Condo Landscape Architectural Design" at Vietnam Property Award 2017. More than 60,000m<sup>2</sup> of aluminum glazing systems have been manufactured and installed by BM Windows. The sub-frame system proposed by BM Windows is the optimal solution, meeting the contractor's gangform requirements, ensuring cost efficiency, creating aesthetics for the building and guaranteeing the product's durability over the years.

Location: District 2, Ho Chi Minh City



## Specifics

Developer: Binh Thien An Real Estate Corporation.

Scale: 5 blocks of 23-29 storeys residential towers.

Categories: Doors, Windows, Balustrades, Partition, Shower Screen.

Construction time: 2017-2018.



# The Grand Ho Tram Strip 2

The Grand Ho Tram Strip is the first world class integrated resort in Vietnam with the most luxurious 5- star rooms. The project is constructed over 164ha with a total investment of 4.2 billion USD. The Greg Norman Signature designed golf course, The Bluffs, is ranked in the top 100 world's best golf courses by reputable Golf Digest Magazine.

Location: Xuyen Moc District, Vung Tau Province.



## Specifics

Developer: Asia Coast Development Ltd. (ACDL)

Scale: 5-star hotel and resort with more than 550 rooms and other facilities.

Categories: Curtain Walls, Doors, Windows, Louvers, Balustrades, Partition, Shower Screen.

Construction time: 2019-2020.



# Friendship Tower

Located at the centre of the CBD area of Ho Chi Minh City, Friendship Tower is a Grade-A Green Building with the award of LEED Gold Certificate and the Best Office Architecture Vietnam 2019 by the Asia-Pacific Property Awards Architecture. Working with the developer CZ Slovakia Vietnam, BM Windows has applied the Low-E double glazing system for the facade of the project, adapting requirements on energy saving, emission reduction.

Location: District 1, Ho Chi Minh City.



## Specifics

Developer: CZ Slovakia Vietnam  
Scale: Grade-A Office Building, 21 storeys and 4 basements.  
Categories: Curtain Wall  
Construction time: 2019



# Australian Projects

## 999 White Horse

Category: Sliding doors and awning windows

This deluxe residential apartment features convenient location and thoughtful design to draw both style and function within homes. Situated at the gateway to the CBD, minutes to Station Street, Box Hill Central transport links, Box Hill Hospital and TAFE, 999 is the ideal location for anyone looking for a modern, high-energy lifestyle. Interior design was carefully crafted to promote purpose and ease while maintaining the overall aesthetics.

## Helm Apartment

Category: Sliding doors, awning windows, storefront, balustrade

Located at the corner of Cook Street and Burwood Road (one of Melbourne's most sought after suburbs), the residential complex is defined by the architecture that blends organic and geometric lines. The façade's distinctive, sleek design brings fresh and exciting outlines into a unity of contemporary expression. Homes feature sophisticated, neutral palette colours to create the perfect place to unwind after a long day.

## Parer Apartment

Category: Sliding doors, awning windows

Developed by the boutique property developer Cornus, Parer Apartment is located right at the heart of Burwood with renowned schools and universities on the doorstep. Created by the drive for quality and refinement, the 26-million-dollar residential project boasts 40 high-end apartments spread across five levels. Sophisticated design meets with the rural-Australian spirit to result in a contemporary and elegant appeal.







Project: Hoang Anh Gia Lai Myanmar Center  
Developer: Hoang Anh Gia Lai Group  
Location: Myanmar

Project: Marvel Garment Factory  
Developer: Marvel Garment Ltd  
Location: Cambodia

Project: The Peak  
Developer: Phu My Hung  
Location: Ho Chi Minh City

Project: Kingdom 101  
Developer: Hoa Lam Group  
Location: Ho Chi Minh City

Project: Aqua Bay  
Developer: Ecopark  
Location: Hung Yen Province

Project: Ecogreen Saigon  
Developer: Xuan Mai Corporation  
Location: Ho Chi Minh City





Project: Q2 Thao Dien  
Developer: Frasers Property  
Location: Ho Chi Minh City



Project: One Verandah  
Developer: Mapletree  
Location: Ho Chi Minh City



Project: The Metropole Thu Thiem  
Developer: Son Kim Land  
Location: Ho Chi Minh City



Project: Vinpearl Condotel Riverfront Da Nang  
Developer: Vingroup  
Location: Da Nang City



Project: D'Capitale  
Developer: Tan Hoang Minh  
Location: Ha Noi



Project: Pullman Quy Nhon  
Developer: TMS Group  
Location: Binh Dinh Province



Project: Everrich 8  
Developer: Phat Dat  
Location: Ho Chi Minh City



Project: Sadora  
Developer: Dai Quang Minh Real Estate Investment JSC  
Location: Ho Chi Minh City



Project: Vinhomes Ocean Park  
Developer: Vingroup  
Location: Ha Noi



Project: Vinhomes Smart City  
Developer: Vingroup  
Location: Ha Noi



Project: Celadon City  
Developer: Gamuda Land  
Location: Ho Chi Minh City



Project: Akari City  
Developer: Nam Long Group  
Location: Ho Chi Minh City





Project: Dragon Bay  
Developer: Doji Group  
Location: Quang Ninh Province

Project: Kosmo Tay Ho  
Developer: Newtatco  
Location: Ha Noi

Project: Diamond Lotus  
Developer: Phuc Khang Group  
Location: Ho Chi Minh City

Project: Vinhomes Central Park  
Developer: Vingroup  
Location: Ho Chi Minh City

Project: The Song  
Developer: An Gia Group  
Location: Vung Tau City



Project: Sora Garden II  
Developer: BTMJR Investment Ltd  
Location: Ho Chi Minh City

Project: Sunrise Riverside  
Developer: Novaland Group  
Location: Ho Chi Minh City









#### OFFICE

Ho Chi Minh City: 60 Nguyen Dinh Chieu Street, Da Kao Ward, Binh Thanh District, Ho Chi Minh City, Viet Nam.

Ha Noi: 67A, Truong Dinh Street, Hai Ba Trung District, Ha Noi Capital, Viet Nam.

#### MANUFACTORY

Binh Duong: CN13 Lot, D1 Street, Song Than 3 Industrial Zone, Thu Dau Mot City, Binh Duong Province, Viet Nam.

Ha Noi: Kilometers 25, Highway 6, Phu Nghia Industrial Zone, Chuong My District, Ha Noi Capital, Viet Nam.

BM Forms: CN30 Lot, Nhon Trach Industrial Zone, Dong Nai Province, Viet Nam.

#### SHOWROOM

Ho Chi Minh: 68A Hoang Hoa Tham Street, Binh Thanh District, Ho Chi Minh City, Viet Nam.

Ho Chi Minh: 8 Le Ngo Cat Street, District 3, Ho Chi Minh City, Viet Nam.



